



**HATTERAS**  
HAMMOCKS

**2023**  
PRODUCT  
CATALOG

# MODERN STYLE, RICH TRADITION

We invite you to see how our 2023 product line exhibits modern style and rich tradition, combining hand selected and carefully sourced raw materials, a meticulous attention to detailed craftsmanship, and an intense passion for luxury relaxation.

## TABLE OF CONTENTS

- 2 | THE HATTERAS DIFFERENCE
- 6 | TUFTED HAMMOCK
- 8 | PILLOWTOP HAMMOCK
- 10 | QUILTED HAMMOCK
- 12 | SOFT WEAVE® HAMMOCK
- 14 | DURACORD® ROPE HAMMOCK
- 16 | DELUXE DOUBLE SWING
- 18 | TUFTED SINGLE SWING
- 20 | HAMMOCK PILLOWS
- 22 | HAMMOCK & SWING STANDS
- 24 | ACCESSORIES
- 25 | STORE DISPLAYS  
& SELLING MATERIALS

*Proudly Handcrafted  
IN THE Carolinas*

Look for our PROUDLY HANDCRAFTED IN THE CAROLINAS badge for our products made right here at home.



# THE HATTERAS

## DIFFERENCE



### OUR COMMITMENT

In 1971, we set out to deliver quality outdoor furniture made in the United States of America. From selecting the finest raw materials to handcrafting our products right here in the Carolinas, we continue to carry out our passion for creating luxury relaxation products for the modern consumer.

### DURACORD ROPE

We Solution-dyed synthetic blend rope that balances the softness of cotton with the durability of polyester. This combination makes the rope All-Weather proof and resistant to rot, mold, and mildew.

### DURABLE FABRICS

All-Weather. Solution-Dyed Synthetic Sunbrella and DuraCord Fabrics are resistant to rot, mold, and mildew.

### OUR WOOD

Brazilian Teak hardwood, is 5 times denser than pine, cedar, and redwood. Ages naturally to a beautiful silver grey. Exclusive to Hatteras Hammocks.

### ZINC PLATED HARDWARE

We plate all hanging hardware, with zinc to protect against rust and ensure an overall longer outdoor life.

### ROLLED RIM GROMMETS WITH SPUR WASHERS

One-of-a-kind grommet, when compared to telescoping grommets used by most of our competitors, that creates a more secure bond between fabric and ring knot.

### ECO-FRIENDLY

Polyester fiberfill filling made from recycled soda bottles is found inside the hammock. The fiberfill is a nonabsorbent material allowing water to drain through and provide quick drying.

### PROUDLY HANDCRAFTED IN THE CAROLINAS

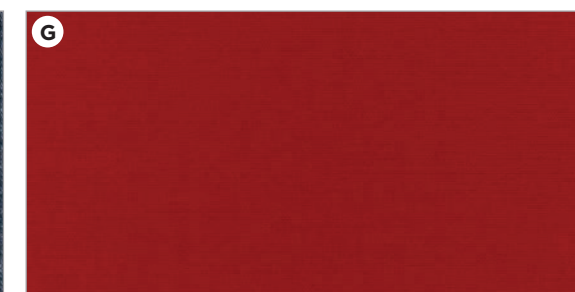
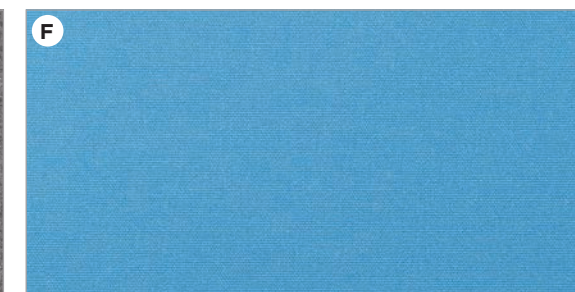
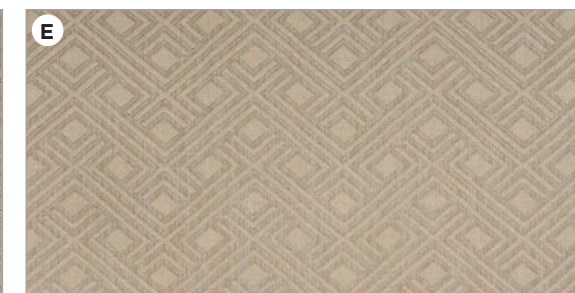
Manufactured in the Carolinas using the finest parts and industry leading techniques.

*Proudly Handcrafted  
IN THE Carolinas*



# TUFTED HAMMOCK

MASTERPIECE OF COMFORT



A masterpiece of outdoor leisure and comfort, the Tufted Hammock will elevate your outdoor experience to the realm of art.

- All-Weather, Solution-Dyed Synthetic Sunbrella® and DuraCord® Fabric with Matching Tufted Pillow
- Recycled Nonabsorbent Polyester Fiberfill Interior
- Cumaru Spreader Bars
- Zinc plated Steel Hanging Hardware
- Rolled-Rim Grommets

#### FABRIC SELECTIONS

- A. Cast Ash • TCASH
- B. Cast Slate • TCSLT
- C. Platform Indigo • TMN7
- D. Luxe Indigo • TMN4
- E. Integrated Pewter • TIP
- F. Canvas Capri • TMN2
- G. Canvas Jockey Red • TEQ
- H. Echo Sangria • TADV2

#### DIMENSIONS

BODY 55" W x 78" L; Overall 13' L  
 HANGING LENGTH 13'-15' L  
 WEIGHT CAPACITY 450 lbs.

#### PACKAGING

WEIGHT 32 lbs.  
 PACKAGE DIMENSIONS 16" x 16" x 61"; 9.04 cu. ft.

ALSO SHOWN I. Original Roman Arc® Cypress Hammock Stand • SAR2 • Page 23

# PILLOWTOP HAMMOCK

NEXT LEVEL  
RELAXATION



Atop a Pillowtop Hammock, amid the undulating waves of cushion, you will indulge in the next level of outdoor relaxation.

- All-Weather, Solution-Dyed Synthetic Sunbrella® and DuraCord® Fabric with a Solid Neutral Reversible Side\*
- Recycled Nonabsorbent Polyester Fiberfill Interior
- Handwoven and Solution-Dyed Three-Ply DuraCord® Rope
- Cumaru Spreader Bars
- Zinc plated Steel Hanging Hardware
- Rolled-Rim Grommets

## FABRIC SELECTIONS

- A. Cast Slate • DLXPTQCSLT
- B. Cast Ash • DLXPTQCASH
- C. Platform Indigo • DLXPTQMN7
- D. Regency Sand • DLXPTQNEU2
- E. Midori Indigo • DLXPTQMN5
- F. Cabana Black • DLXPTQOB2
- G. Expand Calypso • DLXPTQMN7
- H. Expand Tamale • DLXPTQTAM
- I. Gateway Indigo • DLXPTQMN4
- J. Gateway Mist • DLXPTQHZ

## DIMENSIONS

BODY 55" W x 82" L; Overall 13' L  
HANGING LENGTH 13'-15' L  
WEIGHT CAPACITY 450 lbs.

## PACKAGING

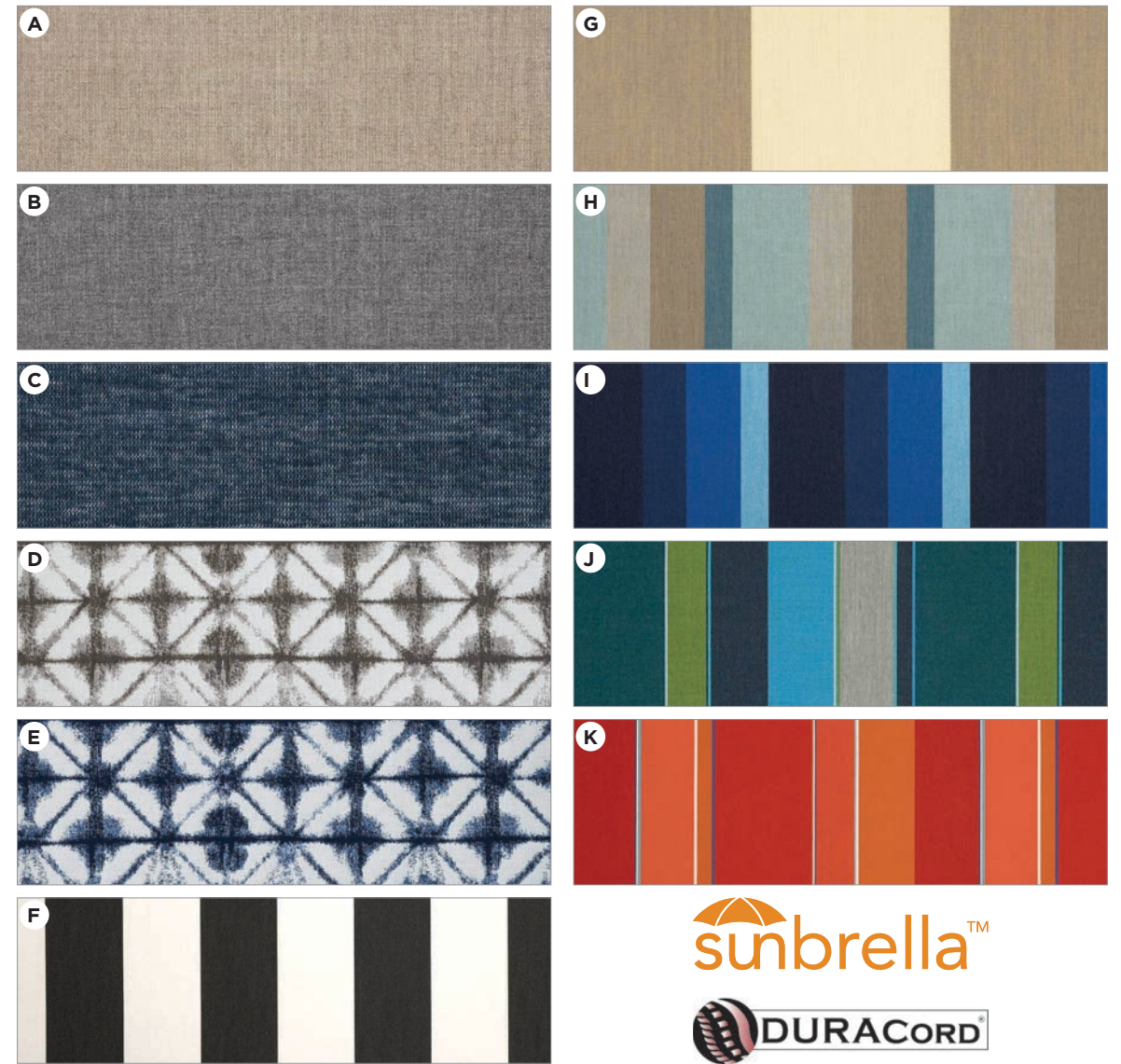
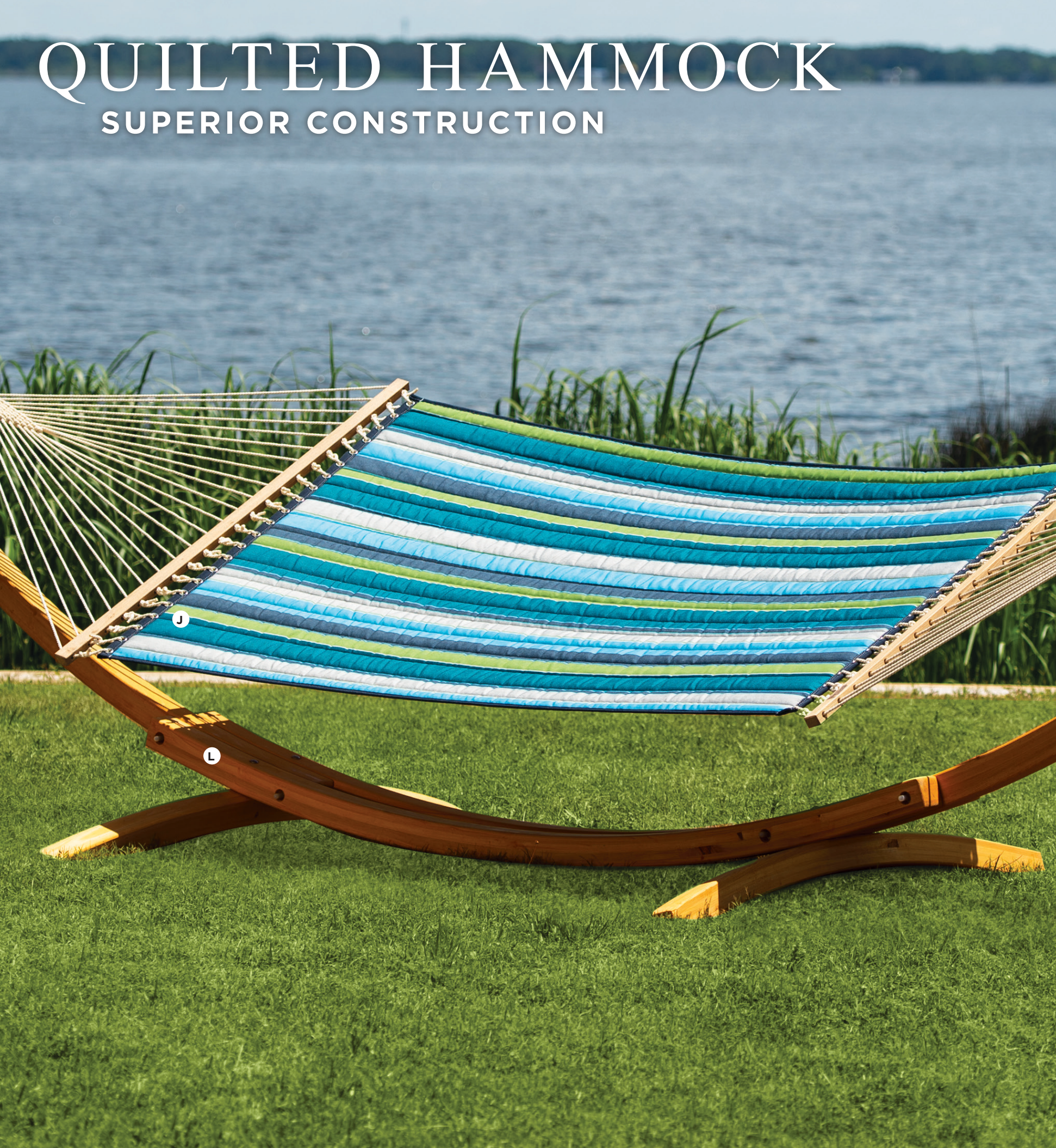
PACKAGE DIMENSIONS 16" x 16" x 61"; 9.04 cu. ft.  
WEIGHT 26 lbs.

\*Cabana Black reverses to the same All-Weather and Solution-Dyed Synthetic Sunbrella® fabric



# QUILTED HAMMOCK

## SUPERIOR CONSTRUCTION



The superior construction of the Quilted Hammock enables you to enjoy outdoor relaxation for years to come.

- All-Weather, Solution-Dyed Synthetic Sunbrella® and DuraCord® Fabric
- Nonabsorbent Polyester Fiberfill Batting
- Handwoven and Solution-Dyed Three-Ply DuraCord® Rope
- Cumaru Spreader Bars
- Zinc plated Steel Hanging Hardware
- Rolled-Rim Grommets

### DIMENSIONS

BODY 55" W x 82" L; Overall 13' L  
 HANGING LENGTH 13'-16' L  
 WEIGHT CAPACITY 450 lbs.

### FABRIC SELECTIONS

- A. Cast Ash • SQ-CASH
- B. Cast Slate • SQ-CSLT
- C. Platform Indigo • SQ-MN7
- D. Midori Stone • SQ-MS
- E. Midori Indigo • SQ-MN5
- F. Cabana Black • SQ-OB3
- G. Regency Sand • SQ-NEU2
- H. Gateway Mist • SQ-HZ
- I. Gateway Indigo • SQ-MN4
- J. Expand Calypso • SQ-CALYPSO
- K. Expand Tamale • SQ-TAMALE

### PACKAGING

WEIGHT 14 lbs.  
 PACKAGE DIMENSIONS 57" x 12" x 6"; 2.38 cu. ft.

ALSO SHOWN L. Original Roman Arc® Cypress Hammock Stand • SAR2 • Page 30

# SOFT WEAVE® HAMMOCK

WOVEN IN TRANQUILITY



With ribbons of fabric woven in tranquility, the Soft Weave® Hammock invites you to relax in its textured and cozy escape.

- All-Weather, Solution-Dyed Olefin Fabric
- Nonabsorbent Polyester Fiberfill Batting
- Handwoven, weather resistant three-ply Duracord® Rope
- Cumaru Spreader Bars
- Zinc plated Steel Hanging Hardware
- Rolled-Rim Grommets

#### FABRIC SELECTIONS

- A. Navy • SQ-WEAVE-NAVY
- B. Light Green • SQ-WEAVE-LTGR
- C. Antique Beige • SQ-WEAVE-ANTBGE

#### DIMENSIONS

BODY 55" W x 82" L; Overall 13' L  
HANGING LENGTH 13'-15' L  
WEIGHT CAPACITY 450 lbs.

#### PACKAGING

WEIGHT 21 lbs.  
PACKAGE DIMENSIONS 57" x 12" x 6"; 2.38 cu. ft.

**ALSO SHOWN:** Z. Soft Weave® Hammock Pillow, Navy • B-WEAVE-NAVY | AA. Soft Weave® Hammock Pillow, Light Green • B-WEAVE-LTGR  
Y. Soft Weave® Hammock Pillow, Antique Beige • B-WEAVE-AB • page 21 | D. Original Roman Arc® Cypress Hammock Stand • SAR2 • Page 23





# DURACORD® ROPE HAMMOCK

## TIMELESS TRADITION

### ROPE SELECTIONS



(rope shown to size)

The DuraCord® Rope Hammock provides a soft as cotton feel, with durability and color steadfast of polyester. Always maintaining that great traditional look, our rope hammocks blend the best materials and superior handcrafted manufacturing techniques.

- Handwoven and Solution-Dyed Three-Ply DuraCord® Rope
- Cumaru Spreader Bars
- Zinc plated Steel Hanging Hardware
- Proudly Handcrafted in the Carolinas

#### A. PRESIDENTIAL • DC-15

Room for Three or More

**BODY** 65" W x 82" L;  
**Overall** 13' L  
**HANGING LENGTH** 13'-16'  
**WEIGHT CAPACITY** 450 lbs.

**PACKAGING**  
**WEIGHT** 21 lbs.  
**DIMENSIONS** 66" x 6.25" x 6.25"; 1.54 cu. ft.

#### C. LARGE • DC-13

Room for Two

**BODY** 55" W x 82" L;  
**Overall** 13' L  
**HANGING LENGTH** 13'-16'  
**WEIGHT CAPACITY** 450 lbs.

**PACKAGING**  
**WEIGHT** 18 lbs.  
**DIMENSIONS** 57" x 6.25" x 6.25"; 1.39 cu. ft.

#### B. DELUXE • DC-14

Room for Two or More

**BODY** 60" W x 82" L;  
**Overall** 13' L  
**HANGING LENGTH** 13'-16'  
**WEIGHT CAPACITY** 450 lbs.

**PACKAGING**  
**WEIGHT** 21 lbs.  
**DIMENSIONS** 63" x 6.25" x 6.25"; 1.54 cu. ft.

#### D. SINGLE • DC-11

Room for One

**BODY** 45" W x 74" L;  
**Overall** 11' L  
**HANGING LENGTH** 11'-13'  
**WEIGHT CAPACITY** 350 lbs.

**PACKAGING**  
**WEIGHT** 14 lbs.  
**DIMENSIONS** 57" x 5.75" x 5.5"; 0.62 cu. ft.

#### ALSO SHOWN

- J. Long Hammock Pillow Expand Calypso B-EXC-LONG • Page 20  
H. Original Roman Arc® Cypress Hammock Stand SAR2 • Page 23



# DELUXE DOUBLE SWING

CUSHIONED COMFORT FOR TWO



Sway away your worries with our one of a kind designed Cumaru Deluxe Double Swing.

- All-Weather, Solution-Dyed Synthetic Sunbrella® and DuraCord® Fabric
- Recycled Nonabsorbent Polyester Fiberfill Interior
- Cumaru Frame
- Zinc plated Steel Hanging Hardware

#### FABRIC SELECTIONS

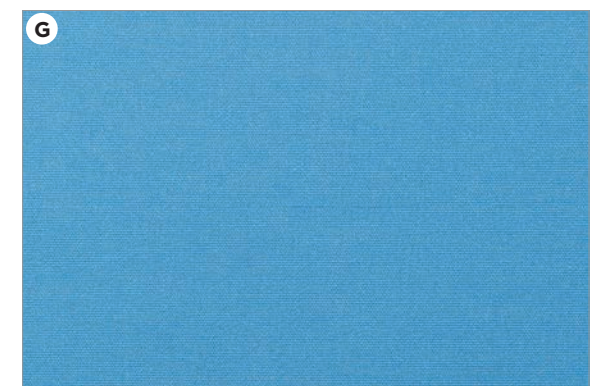
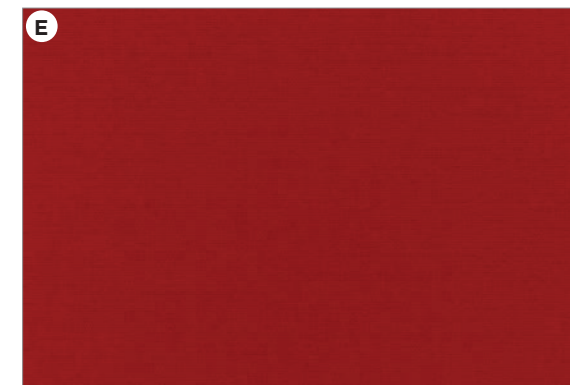
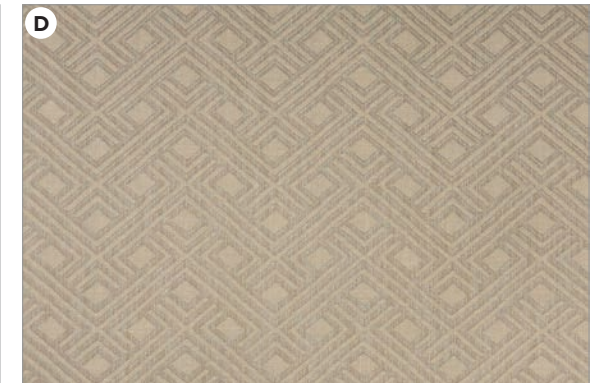
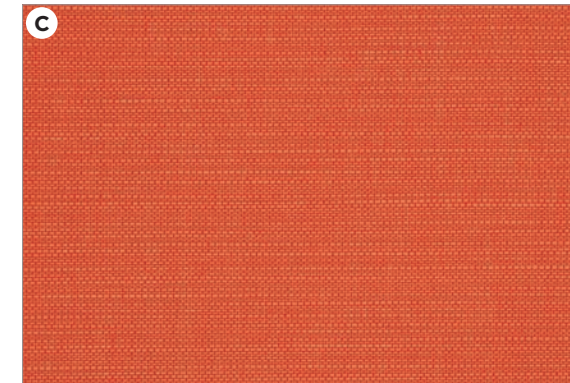
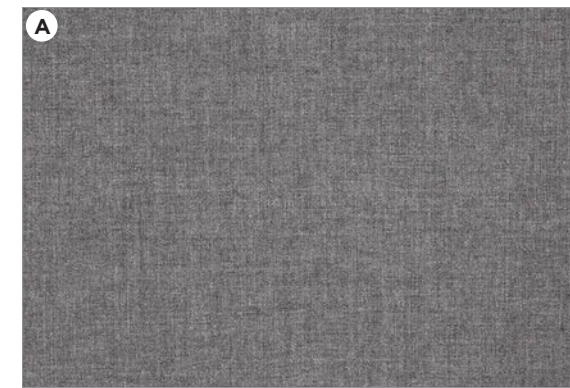
- A. Cast Ash • CMN5X-CM
- B. Cast Slate • CCSLTX-CM
- C. Platform Indigo • CMN7X-CM
- D. Midori Indigo • CMN5X-CM
- E. Midori Stone • CMSX-CM
- F. Regency Sand • CNEU2X-CM
- G. Gateway Mist • CHZX-CM
- H. Gateway Indigo • CMN4X-CM
- I. Expand Calypso • CCALYPSO-CM
- J. Expand Tamale • CTAMALE-CM
- K. Cabana Black • COB04X-CM





# TUFTED SINGLE SWING

UNIQUE COMFORT



Tufted Single Swings entice you to indulge in a customized lounging comfort unique to you.

- All-Weather, Solution-Dyed Synthetic Sunbrella® and DuraCord® Fabric
- Recycled Nonabsorbent Polyester Fiberfill Interior
- Handwoven and Solution-Dyed Three-Ply DuraCord® Rope
- Cumaru Spreader Bar
- Zinc plated Steel Hanging Hardware
- Rolled-Rim Grommets

### FABRIC SELECTIONS

- A. Cast Slate • TSSCSLT
- B. Cast Ash • TSSCASH
- C. Echo Sangria • TSSADV2
- D. Integrated Pewter • TSSIP
- E. Jockey Red • Jockey Red
- F. Midori Indigo • TSSMN4
- G. Canvas Capri • TSSMN2

### DIMENSIONS

SEAT 24" W x 24" D  
SPREADER BAR 40" W  
WEIGHT CAPACITY 300 lbs.

### PACKAGING

WEIGHT 14 lbs.  
PACKAGE DIMENSIONS 30" x 30" x 8"; 4.17 cu. ft.

# HAMMOCK PILLOWS



## TRADITIONAL HAMMOCK PILLOWS

- All-Weather, Solution-Dyed Synthetic Sunbrella® or DuraCord® Fabric
- Recycled Nonabsorbent Polyester Fiberfill
- Hook-and-Loop Straps to Attach to Hammock Spreader Bars
- Rolled-Rim Brass Grommets

## FABRIC SELECTIONS

- |                      |                        |
|----------------------|------------------------|
| Q. Glacier • B-GL    | V. Sunflower • B-SF    |
| R. Cocoa • B-CO      | W. Cast Laurel • B-LR  |
| S. Navy • B-NV       | X. Leaf Green • B-LEAF |
| T. Jockey Red • B-JR | Y. Forest Green • B-3  |
| U. Natural • B-11    |                        |

## DIMENSIONS

34" x 16"  
**PACKAGING**  
 WEIGHT 4 lbs.  
 DIMENSIONS 30" X 14" X 6.5"; 1.58 cu. ft.



## SOFT WEAVE® HAMMOCK PILLOWS

- All-Weather and Solution-Dyed Olefin Fabric
- Recycled Nonabsorbent Polyester Fiberfill
- Hook-and-Loop Straps to Attach to Hammock Spreader Bars

## FABRIC SELECTIONS

- |                                |
|--------------------------------|
| Y. Antique Beige • B-WEAVE-AB  |
| Z. Navy • B-WEAVE-NAVY         |
| AA. Light Green • B-WEAVE-LTGR |

## DIMENSIONS

34" x 16"  
**PACKAGING**  
 WEIGHT 6 lbs.  
 DIMENSIONS 30" X 14" X 6.5"; 1.58 cu. ft.



## LONG HAMMOCK PILLOWS

- All-Weather, Solution-Dyed Synthetic Sunbrella® or DuraCord® Fabric
- Recycled Nonabsorbent Polyester Fiberfill
- Hook-and-Loop Straps to Attach to Hammock Spreader Bars

## DIMENSIONS

52" x 18"  
**PACKAGING**  
 WEIGHT 4.75 lbs.  
 DIMENSIONS 57" X 12" X 6"; 2.38 cu. ft.

## FABRIC SELECTIONS

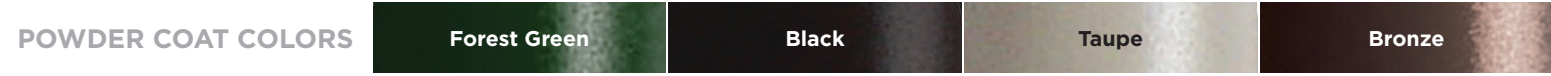
- |                                    |                                |
|------------------------------------|--------------------------------|
| A. Cast Ash • B-ASH-LONG           | I. Gateway Aloe • B-GALOE-LONG |
| B. Cast Slate • B-SLT-LONG         | J. Expand Calypso • B-EXC-LONG |
| C. Platform Indigo • B-PI-LONG     | K. Gateway Indigo • B-GI-LONG  |
| D. Cream • B-OT-LONG               | L. Expand Tamale • B-EXT-LONG  |
| E. Regency Sand • B-RS-LONG        | M. Midori Stone • B-MST-LONG   |
| F. Gateway Mist • B-GM-LONG        | N. Midori Indigo • B-MI-LONG   |
| G. Gateway Coast • B-GC-LONG       | O. Navy • B-NV-LONG            |
| H. Gateway Tamale • B-GTAMALE-LONG | P. Echo Sangria • B-ES-LONG    |

WEIGHT  
4.75 lbs.  
DIMENSIONS  
57" X 12" X 6";  
2.38 cu. ft.

# HAMMOCK STANDS AND SWING STANDS



FEATURES & BENEFITS	TRI-BEAM® STEEL HAMMOCK STAND	KD STEEL HAMMOCK STAND	STEEL ARC HAMMOCK STAND	DELUXE ROMAN ARC® CYPRESS HAMMOCK STAND	ORIGINAL ROMAN ARC® CYPRESS HAMMOCK STAND	ORIGINAL ROMAN ARC® CYPRESS SWING STAND	STEEL wARC HAMMOCK STAND	DOUBLE SWING STAND	FEATURES & BENEFITS
NO TOOL ASSEMBLY	●	●							NO TOOL ASSEMBLY
CAPE SHIELD® POWDER COATED	●		●				●	●	CAPE SHIELD® POWDER COATED
360 DEGREE RIGHT CONNECTION	●								360 DEGREE RIGHT CONNECTION
MANUFACTURED IN THE CAROLINAS	●			●	●	●			MANUFACTURED IN THE CAROLINAS
MATERIAL	12 Gauge steel	13 Gauge steel	13 Gauge steel	7 Layers of laminated Southern Cypress	4 Layers of laminated Southern Cypress	5 Layers of laminated Southern Cypress	12 Gauge steel	12 Gauge steel	MATERIAL
TUBE DIAMETER	2" Outside Diameter	1.9" Outside Diameter	1.9" Outside Diameter	3" x 5" Beam Size	3" x 3" Beam Size				TUBE DIAMETER
WEIGHT CAPACITY	600 lbs.	450 lbs.	450 lbs.	450 lbs.	450 lbs.	450 lbs.	350 lbs.	450 lbs.	WEIGHT CAPACITY
ASSEMBLED DIMENSION & WEIGHT	15' L x 4' W x 4' H 60 lbs.	15' L x 4' W x 4' H 51 lbs.	15' L x 4' W x 4' H 68 lbs.	15' L x 5' W x 4' H 150 lbs.	15' L x 4' W x 4' H 100 lbs.	7' L x 5.5" W x 7' H 101 lbs.	5' W x 7' 11" H 80 lbs.	6' 7" W x 5' D x 7' H	ASSEMBLED DIMENSION & WEIGHT
PACKAGE DIMENSIONS	71.75" x 13.5" x 5.5"	48" x 12" x 6"	74" x 13.5" x 5"	(2) 92" x 15" x 3.5" (1) 86" x 15.5" x 6.5"	(2) 93" x 15" x 3.5"	(2) 91" x 12" x 3" (1) 86" x 15.5" x 6.5"	58.5" x 28.5" x 6.5"		PACKAGE DIMENSIONS
COLOR	Forest Green • L-STGTX Black • L-STBKTX Bronze • L-STBRTX	Taupe • L-EKDTP Bronze • L-EKDBRZ	Black • L-ARCBK-I Taupe • L-ARCTTX-I Bronze • L-ARCBR-I	Natural, Cypress • SAR	Natural, Cypress • SAR-2	Natural, Cypress • S-2ST	Black • LUNABK	Black • SWSTSQBK	COLOR





**A. SWING SPRING SWSP1**

- Heavy-Duty Zinc plated Steel
- 600 lb Weight Capacity

**DIMENSIONS 2" W X 6.25" H**

**WEIGHT 1 LB.**

**MAILING-ENVELOPE DIMENSIONS 10.5" X 16"**

**B. HAMMOCK TREE STRAPS TS120**

- All-Weather Nylon Webbed Strapping with Fitted S-Hooks
- Two Straps per Package

**DIMENSION: 2" X 120" LONG**

**WEIGHT 1 LB.**

**MAILING-ENVELOPE DIMENSIONS 10.5" X 16"**

**C. HAMMOCK LOOP STRAPS HS-LPCARCW**

- 17 loops provide easy adjustability
- Two Straps per Package

**DIMENSION: 1.5" X 120" LONG**

**WEIGHT 1 LB.**

**MAILING-ENVELOPE DIMENSIONS 10.5" X 16"**

**D. ROPE HAMMOCK STORAGE BAG LSB**

- Polyester Cotton Blend Fabric
- Rope Hammock and Hanging Hardware Storage Accessory

**DIMENSIONS 62" L X 13" W**

**WEIGHT 2 LBS.**

**MAILING-ENVELOPE DIMENSIONS 10.5" X 16"**

**E. HAMMOCK WHEEL KIT W-KIT-2G**

- Zinc plated Hardware
- Tri-Beam® & KD Steel Hammock Stands Accessory

**DIMENSIONS 6" WHEEL DIAMETER**

**WEIGHT 6 LBS.**

**PACKAGE DIMENSIONS 10" X 6.5" X 7"; 0.26 CU. FT.**



The following customizable and free standing store displays merchandise and sell the Hatteras Hammocks® brand of innovative relaxation products to your customers.

**F-G. CYPRESS 12-HAMMOCK DISPLAY**

**F. Cypress Swing Stand Display Top • S-2ST-CBEAM-DIS**

**G. Legs • S-2ST-LEGS**

- Free Standing
- Displays Twelve Full-Sized Hammocks
- Hatteras Hammocks® Sign
- Footprint: 7' L x 5.5' W; approx. 7' H

Requires hammock(s) purchase

**H. HATTERAS HAMMOCKS® AUTHORIZED DEALER WINDOW DECAL**

**I-J. METAL 12-HAMMOCK DISPLAY**

**I. Hammock Floor Display • F-DISP-TP**

**J. Canopy • F-DISP-CPY-P**

- Free Standing
- Displays Twelve Full-Sized Hammocks
- Footprint: 3' L x 3' W; approx. 8' H

Requires hammock(s) purchase

**K. HATTERAS HAMMOCKS® 2019 FABRIC SWATCH SET HH-SWATCH23**



The Hatteras story begins back in 1971, when a young Mr. Perkins was a buyer for the American Tobacco Company, which had him traveling often, all throughout the Southeast. Before one particular work trip out to his beloved Carolina beaches, his mother asked him if he'd pick her up one of those rope hammocks like you'd see sold all along the coast. As soon as Mr. P. found her one, he knew he had to buy another for himself. An avid woodworker with a true inventor's streak, he couldn't resist the idea of taking it apart, putting it back together, figuring out what made it work. How can I make an even better hammock than this one? So he pulled together some raw materials, started tinkering around with the design, substituting stronger rope, for instance, and heavier, safer chain. He experimented with everything, wasting nothing - he even tried using old tobacco-curing sticks as an early wood source for his hammock spreader bars.

Before he knew it, Mr. P. was a bona fide hammock-maker. He sold his early designs right out of the trunk of his old Toyota station wagon during later beach visits and work trips across the Southeast, up as far as Washington, D.C. "It was the perfect example of a hobby becoming a business," Mr. P. has often said. And he'll be the first to tell you that he really had no idea what he was getting himself into.

Soon enough, he couldn't keep up with the demand for his handcrafted hammocks. Family members pitched in - Hatteras CEO Walter R. Perkins III, for one, grew up making hammocks right alongside his father. Company legend has it that a young Walter, every bit as much the tinkerer as his old man, first showed Mr. P. how to tie a ring knot. By 1987, Hatteras Hammocks had blossomed into the world's top hammock producer, known for its humble and storied beginnings, unmatched designs,

innovative blending of handcrafting and state-of-the-art manufacturing processes, exceptional customer service and, yes, for plain and simply making one darn-fine hammock, and then always working to make the next one even better still.

Thank you for your desire to learn more about our products and company. We want to get to know more about your business and provide you with the information you need to succeed. Together, we can build a profitable program for your business.



Walter Reid Perkins III  
CEO, Hatteras Hammocks and The Hammock Source



# HATTERAS

H A M M O C K S

A DIVISION OF THE HAMMOCK SOURCE

305 Industrial Blvd. | Greenville, NC 27834 | 252.758.0641

[info@thehammocksource.com](mailto:info@thehammocksource.com)

[www.TheHammockSource.com](http://www.TheHammockSource.com)

